



ES1003 (dMEV): this SAP Q Eligible fan combines the latest technology with energy saving efficiency. It is a quiet running three speed fan, designed to run continuously at a pre-selectable choice of 2 lower speeds (fixed at installation).

The user can boost the fan speed to maximum performance by means of the cord or a remote switch, light switch, PIR sensor or humidistat. This fan can be used in all domestic wet rooms





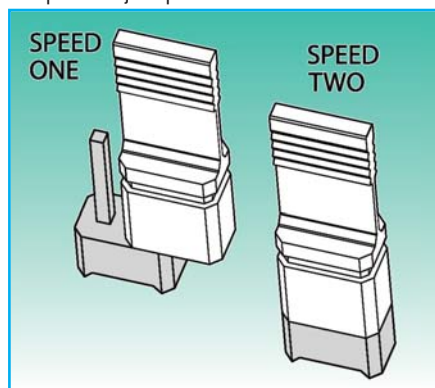
E-Smile

Technical Characteristics



FEATURES

- **SAP Q eligible** (dMEV) fan to exhaust air and fumes directly outside or through medium length ducting
- suitable for any domestic wet room, toilets, shower-rooms, bathrooms, utility rooms and kitchens
- 3 Speed fan
- runs continuously at pre-selectable choice of two lower speeds (fixed at installation)
- the **ES1003** is factory set at Speed 1 (jumper switch with one pin covered) to operate at 11 l/s for bathrooms
- Speed 2 (14 l/s for kitchens) is easily obtainable by covering both pins of jumper switch



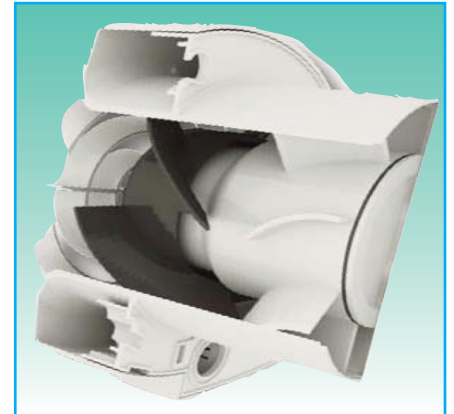
- all models complete with cord which can be removed to allow other types of switching
- user can boost speed to maximum performance by means of the cord, or if the cord is removed by a:
 - remote switch
 - PIR sensor
 - humidistat
- the design of the **ES1003** allows it to be installed at any angle
- energy saving efficiency (min 3.8 watts)
- extremely low running costs
- low carbon footprint
- very quiet operation (min 16 dBA)
- easy to install in walls or ceilings - only three fixing points
- 3 year warranty
- Vectaire Ltd can supply all accessories for use with these units, including ducting, outside grilles and wall cowls

SPECIFICATION

- compact, ultra modern, technically innovative high performance fan
- designed and constructed using recyclable and/or reusable materials and components for minimum ecological impact
- casing manufactured from shock proof, high quality technopolymer
- designed using latest wind tunnel technology and CFD simulations
- aerodynamic profile provided with deflectors designed to increase the fluid dynamics of the fan
- induction motor with thermal protection
- motors (40,000 hour life) with maintenance free and long life ball bearings
- operates in ambient temperatures up to 40°C
- double insulated - no earth required
- **IPX4 - Splashproof** rated so can safely be installed in Zones I and II



Vectaire Ltd offers a design service to ensure that the unit installed is the best possible to provide efficient, effective, low energy and low running cost ventilation. Vectaire can also organise installation and commissioning of these products



Other Models:

ES1003CF - model c/w filter

ES1003CLV - SELV - 12v model

ES100H2C - 2 speed, humidity control

ES100H2CLV - 2 speed, humidity control - SELV - 12v model



COMPLIES WITH

- Part L1A and L1B of Building Regulations for enhanced energy saving capability
- Part F of Building Regulations for reliable, efficient ventilation
- complies with IEC 60335-2-80, LVD2006/95/CE and EMC 2004/108/CE European Directive against radio interference and electro-magnetic compatibility
- CE marked
- **SAP Q eligible**
- **Energy Saving Trust Best Practice Compliant**



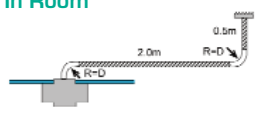
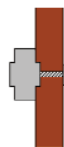
E-Smile

Technical Characteristics - SAP Q Results



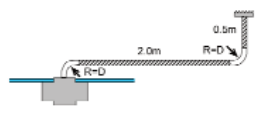
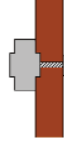
RESULTS for SAP CALCULATIONS

Tables Q1 and Q3

Unit Configuration	Location	Specific Fan Power (W/l/s) Rigid Duct	Specific Fan Power (W/l/s) Flexible or Mixed Duct	Fan Speed Setting
In Room 	Kitchen	0.55	0.57	3
	Wetroom	0.61	0.61	2
Through Wall 	Kitchen	0.37	0.37	2
	Wetroom	0.45	0.45	1

Figures from BRE test results at minimum flow rate conditions

RESULTS for Approved Document F

Unit Configuration	Location	Fan Speed Setting	Rigid Ductwork Installation Only		Flexible or Mixed Ductwork Installation Only		% Reduction of Total Flow Rate
			Flow Rate (l/s)	Flow Rate - Wind Condition (l/s)	Flow Rate (l/s)	Flow Rate - Wind Condition (l/s)	
In Room 	Kitchen	3	14.2	12.8	13.0	11.7	10
	Wetroom	2	11.1	10.2	10.3	9.5	8
Through Wall 	Kitchen	2	15.5	14.0	15.5	14.0	10
	Wetroom	1	9.7	8.9	9.7	8.9	8

Figures from BRE test results at minimum flow rate conditions



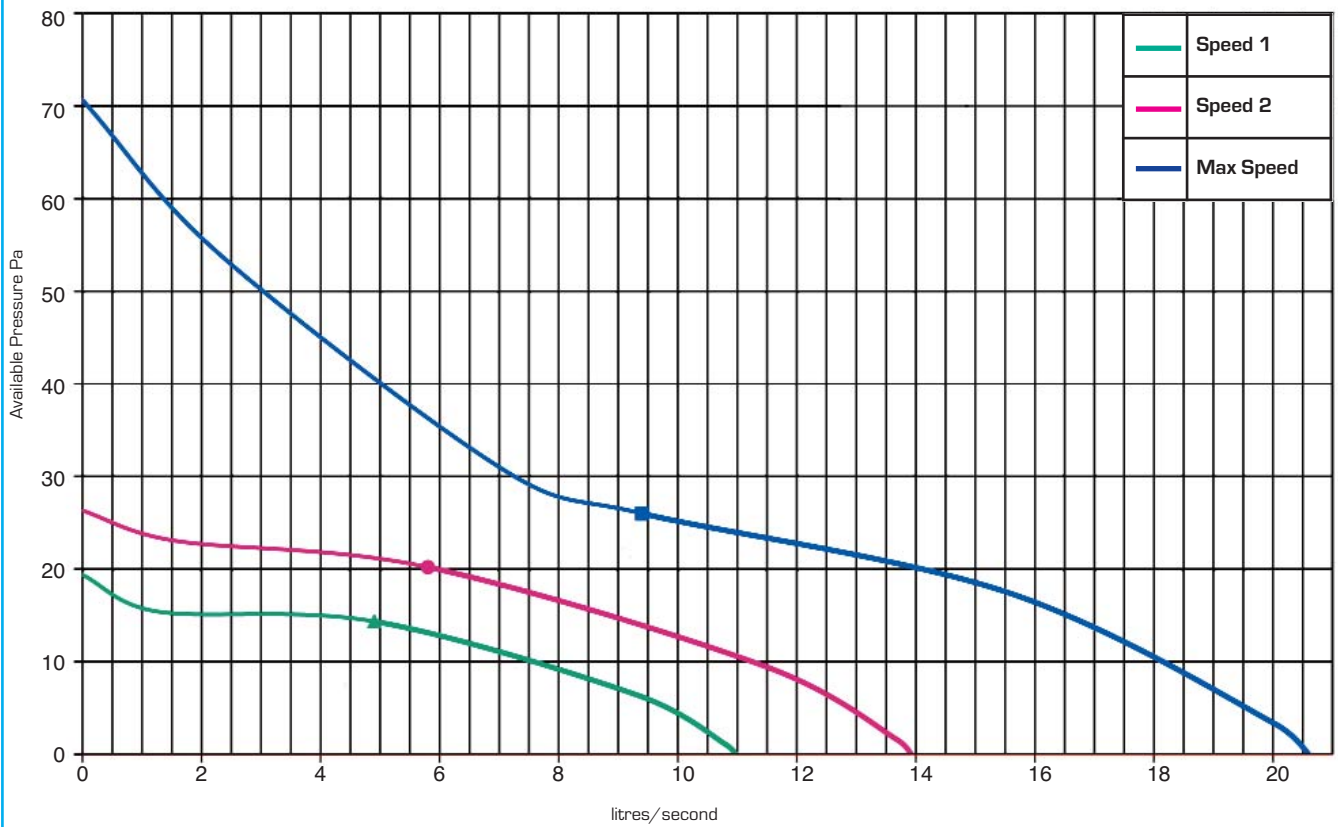
E-Smile

Technical Characteristics - Performance & Dimensions



Model	Airflow l/sec			Power - Watts			Sound Pressure dBA (@ 3m in free field)		
	Speed 1	Speed 2	Boost	Speed 1	Speed 2	Boost	Speed 1	Speed 2	Boost
ES1003	11	14	21	3.8	5.3	7.5	16	19	29

curves are for guidance only



Dimensions (mm)

